

**Panasil® initial contact is more hydrophilic!**

Even under extreme situations Panasil® initial contact offers reliable performance



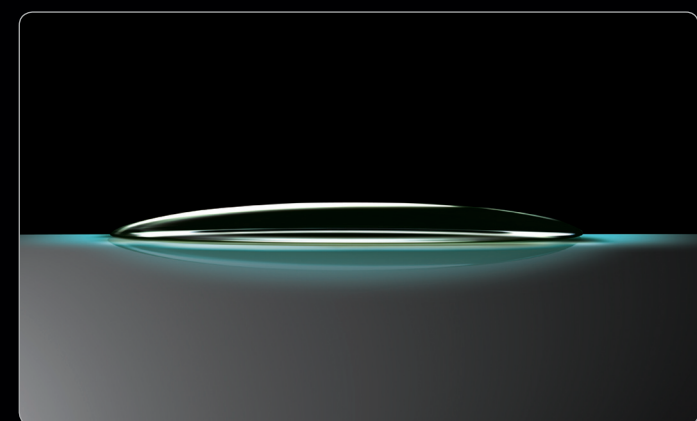
Time Properties		x-light	x-light fast	light	light fast	regular	regular fast
Working Time	230/74F	1:30 min.	1:00 min.	1:30 min.	1:00 min.	1:30 min.	1:00 min.
Working Syringe Time	350/95F	1:00 min.	0:30 min.	1:00 min.	0:30 min.	1:00 min.	0:30 min.
Intraoral Setting Time	350/95F	2:30 min.	2:00 min.	2:30 min.	2:00 min.	2:30 min.	2:00 min.
Total Set Time		4:00 min.	3:00 min.	4:00 min.	3:00 min.	4:00 min.	3:00 min.

In a recent study, A-silicones and polyethers were investigated with respect to their wetting properties using video and high resolution contact angle measurements during the working time.

On the basis of initial hydrophilicity (quantified via the initial contact angle) and hydrophilic kinetics (spreading capacity of the water drop), both initial hydrophilic and high hydrophobic A-silicones were observed.

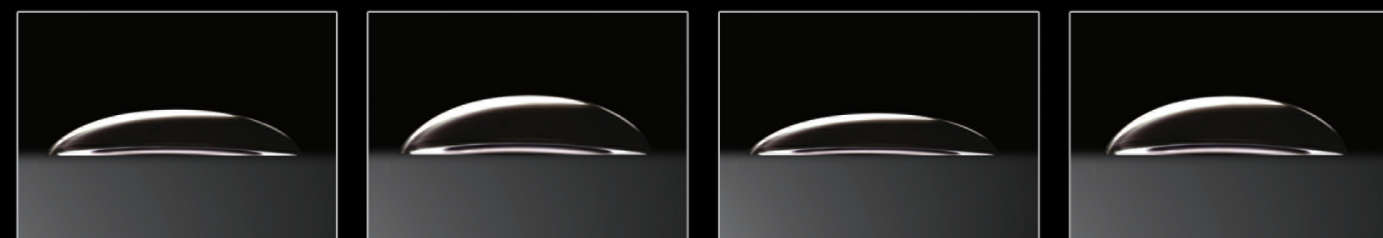
The time of initial contact and the speed with which the liquid spreads play a decisive role in improving the precision of an impression. Furthermore, it is important for the hydrophilicity to be retained throughout the entire working time of the material, not just at the beginning. The tested materials displayed a continuous decrease in hydrophilicity, while the hydrophilicity of the A-silicone Panasil® initial contact remained consistent throughout the entire working time.

Comparison of spreading behavior begins 30 seconds after mixing starts and within the first 3 seconds after applying a water drop at 80% humidity. The test was performed on unpolymerized impression material.



Panasil® initial contact

**Contact Angle Comparison\***



Affinis Light™\*\*

Aquasil Ultra LV™\*\*

Aquasil Ultra XLV™\*\*

Impregum™\*\*

\* Comparative test carried out by Kettenbach contact angle measured using the measuring device DAS 100, from Kruss, 2006. Evaluated using the circle-fit method.

\*\* Affinis Light™, Aquasil Ultra LV™, Aquasil Ultra XLV™ and Impregum™ are not registered or trademarked by Kettenbach.

**Panasil® brand is available in a variety of viscosities and set times.**

**Wash Materials**

- 13401 Panasil® initial contact X-Light, cartridge Normal pack (2 x 50 ml, 12 mixing tips)
- 13461 Panasil® initial contact X-Light fast, cartridge Normal pack (2 x 50 ml, 12 mixing tips)
- 13411 Panasil® initial contact Light, cartridge Normal pack (2 x 50 ml, 12 mixing tips)
- 13471 Panasil® initial contact Light fast, cartridge Normal pack (2 x 50 ml, 12 mixing tips)
- 13431 Panasil® initial contact regular, cartridge Normal pack (2 x 50 ml, 12 mixing tips)
- 13481 Panasil® initial contact regular fast, cartridge Normal pack (2 x 50 ml, 12 mixing tips)

**Monophase Materials**

- 13501 Panasil® monophase Medium, cartridge Normal pack (2 x 50 ml, 12 mixing tips)
- 14708 Panasil® monophase Medium, Intro pack, for use in Sympress Dispenser (1 x 380 ml, 10 dynamic mixers)
- 14709 Panasil® monophase Medium, Refill pack, for use in Sympress Dispenser (2 x 380 ml)

**Heavy Body Materials**

- 13551 Panasil® tray Fast Heavy, cartridge Normal pack (2 x 50 ml, 6 mixing tips)
- 14704 Panasil® tray Fast Heavy, Intro pack, for use in Sympress Dispenser (1 x 380 ml, 10 dynamic mixers)
- 14705 Panasil® tray Fast Heavy, Refill pack, for use in Sympress Dispenser (2 x 380 ml)
- 13541 Panasil® tray Soft Heavy, cartridge Normal pack (2 x 50 ml, 6 mixing tips)
- 13561 Panasil® tray soft fast heavy, cartridge Normal pack (2 x 50 ml, 6 mixing tips)
- 14706 Panasil® tray Soft Heavy, Intro pack, for use in Sympress Dispenser (1 x 380 ml, 10 dynamic mixers)
- 14707 Panasil® tray Soft Heavy, Refill pack, for use in Sympress Dispenser (2 x 380 ml)

**Putty Materials (Mixed and dispensed by the Sympress Dispenser)**

- 14700 Panasil® binetics Putty Fast, Intro pack, for use in Sympress Dispenser (1 x 380 ml, 10 dynamic mixers)
- 14701 Panasil® binetics Putty Fast, Refill pack, for use in Sympress Dispenser (2 x 380 ml)
- 14702 Panasil® binetics Putty Soft, Intro pack, for use in Sympress Dispenser (1 x 380 ml, 10 dynamic mixers)
- 14703 Panasil® binetics Putty Soft, Refill pack, for use in Sympress Dispenser (2 x 380 ml)

**Putty Materials (Hand mixed)**

- 11101 Panasil® Putty, jar (2 x 450 ml, 2 scoops)
- 11121 Panasil® Putty Soft, jar (2 x 450 ml, 2 scoops)
- 11141 Panasil® Putty Fast, jar (2 x 450 ml, 2 scoops)

**Precise Detail  
Predictable Results  
The Power of Panasil®**



Panasil® initial contact  
Panasil® monophase Medium  
Panasil® tray  
Panasil® binetics Putty  
Panasil® Putty



VPS Impression Materials

1-877-532-2123

# A wide range of choices for a wide range of indications

Panasil® impression materials are addition-curing vinyl polysiloxane (VPS) elastomeric materials with hydrophilic properties, high tear strength, dimensional accuracy and a high resistance to permanent deformation. Panasil® materials provide superior precision and performance in extreme situations. With a variety of viscosities and set times, Panasil® can provide a custom combination to suit your specific needs.

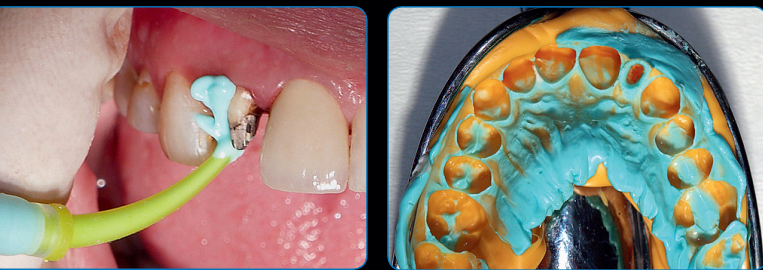
**Panasil® initial contact X-Light** *normal or fast set*  
**Panasil® initial contact Light** *normal or fast set*  
**Panasil® initial contact Regular** *normal or fast set*

Panasil® initial contact has a unique initial hydrophilicity, allowing the material to immediately overcome any remaining moisture in the mouth. You can be assured of an exact impression of the preparation margin, even in situations with a deep sulcus or an especially moist environment.

Panasil® initial contact is also highly thixotropic, with outstanding flow properties and a short intra-oral setting time.

Panasil® initial contact, available in three viscosities x-light (very low viscosity), light (low viscosity) and regular (medium viscosity), can ideally be combined with Kettenbach final impression materials: Panasil® binetics putty, Panasil® monophase Medium, Panasil® tray and the classic Panasil® Putty.

- Flexible working time
- Unique initial hydrophilicity immediately overcomes moisture and provides direct contact with the moist tooth surface
- Accurate impressions of the preparation margin
- Clinical conditions (moist oral cavity) improve the initial hydrophilicity
- The material flows well under pressure, yet doesn't drip or slump



## Panasil® monophase Medium

Panasil® monophase Medium is a hydrophilic medium viscosity impression material that offers significant advantages for taking transfer impressions. During application, Panasil® monophase Medium demonstrates favorable wettability at first contact with moist surfaces and adapts perfectly around the preps.

- Less distortion while the material is setting
- Retains inner copings or frameworks firmly
- Easily removed from the mouth with high tear strength
- Dimensionally stable
- Convenient Sympress Dispenser or cartridge delivery system



## Panasil® tray Fast Heavy Panasil® tray Soft Heavy Panasil® tray Soft Heavy Fast

Panasil® tray is high viscosity material with its “fast”, “soft” and “soft fast” versions of addition-curing preliminary impression material.

- User and patient friendly setting characteristics
- Highly thixotropic
- Easy to remove from mouth
- No taste or smell
- Pressure builds up rapidly
- High patient acceptance
- Easy handling
- Convenient Sympress Dispenser or cartridge delivery system



## Panasil® monophase Medium

Time Properties	Sympress (5:1)	Cartridge (1:1)
Working Time	23/74F 2:00 min.	2:00 min.
Working Syringe Time	35/95F 1:00 min.	1:00 min.
Intraoral Setting Time	35/95F 2:00 min.	2:00 min.
Total Setting Time	4:00 min.	4:00 min.
Shore Hardness	A58	A58



## Panasil® tray Fast Heavy

Time Properties	Sympress (5:1)	Cartridge (1:1)
Working Time	23/74F 1:20 min.	1:00 min.
Intraoral Setting Time	35/95F 2:00 min.	2:00 min.
Total Setting Time	3:20 min.	3:00 min.
Shore Hardness	A62	A62

## Panasil® tray Soft Heavy

Time Properties	Sympress (5:1)	Cartridge (1:1)
Working Time	23/74F 2:00 min.	2:00 min.
Intraoral Setting Time	35/95F 2:00 min.	2:00 min.
Total Setting Time	4:00 min.	4:00 min.
Shore Hardness	A55	A55

## Panasil® tray Soft Heavy Fast

Time Properties	Cartridge (1:1)
Working Time	23/74F 1:00 min.
Intraoral Setting Time	35/95F 2:00 min.
Total Setting Time	3:00 min.
Shore Hardness	A55

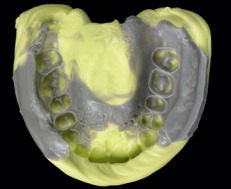
## Panasil® binetics Putty Soft Panasil® binetics Putty Fast

Panasil® binetics Putty is a real putty in 5:1 jumbo cartridge, allowing exact dosage and reduced material usage. Supplied in Kettenbach's Sympress Dispenser, Panasil® binetics Putty can also be used in most competitive dispensers. Panasil® binetics Putty is available in two versions: putty fast or putty soft.

- Exact dosage with less waste
- Good elastic properties
- Easy and hygienic mixing
- Easily removed from the mouth
- Convenient Sympress Dispenser delivery system



Time Properties	binetics Putty Fast Jumbo cartridge (5:1)	binetics Putty Soft Jumbo cartridge (5:1)
Working Time	23/74F 1:30 min.	2:00 min.
Intraoral Setting Time	35/95F 2:30 min.	3:00 min.
Total Setting Time	4:00 min.	5:00 min.
Shore Hardness	A63	A56



**No More Manual Kneading**

## Panasil® Putty Panasil® Putty Soft Panasil® Putty Fast

Panasil® Putty impression material is an elastomeric impression material with excellent hydrophilic properties, dimensional accuracy, high tear strength and resistance to permanent deformation. Panasil® Putty is available in three versions: putty, putty fast or putty soft.

## Panasil® Putty

Time Properties		
Working Time	23/74F 2:00 min.	2:00 min.
Intraoral Setting Time	35/95F 2:00 min.	2:00 min.
Total Setting Time	4:00 min.	4:00 min.
Shore Hardness	A66	A66

## Panasil® Putty Soft

Time Properties		
Working Time	23/74F 2:00 min.	2:00 min.
Intraoral Setting Time	35/95F 2:00 min.	2:00 min.
Total Setting Time	4:00 min.	4:00 min.
Shore Hardness	A60	A60

## Panasil® Putty Fast

Time Properties		
Working Time	23/74F 1:30 min.	1:30 min.
Intraoral Setting Time	35/95F 2:00 min.	2:00 min.
Total Setting Time	3:30 min.	3:30 min.
Shore Hardness	A66	A66



- Excellent resistance
- Forms functional peripheries
- Outstanding elastic properties with non-sticky, supple texture
- No taste or smell
- Choice of viscosities and set times
- Easily removed from the mouth